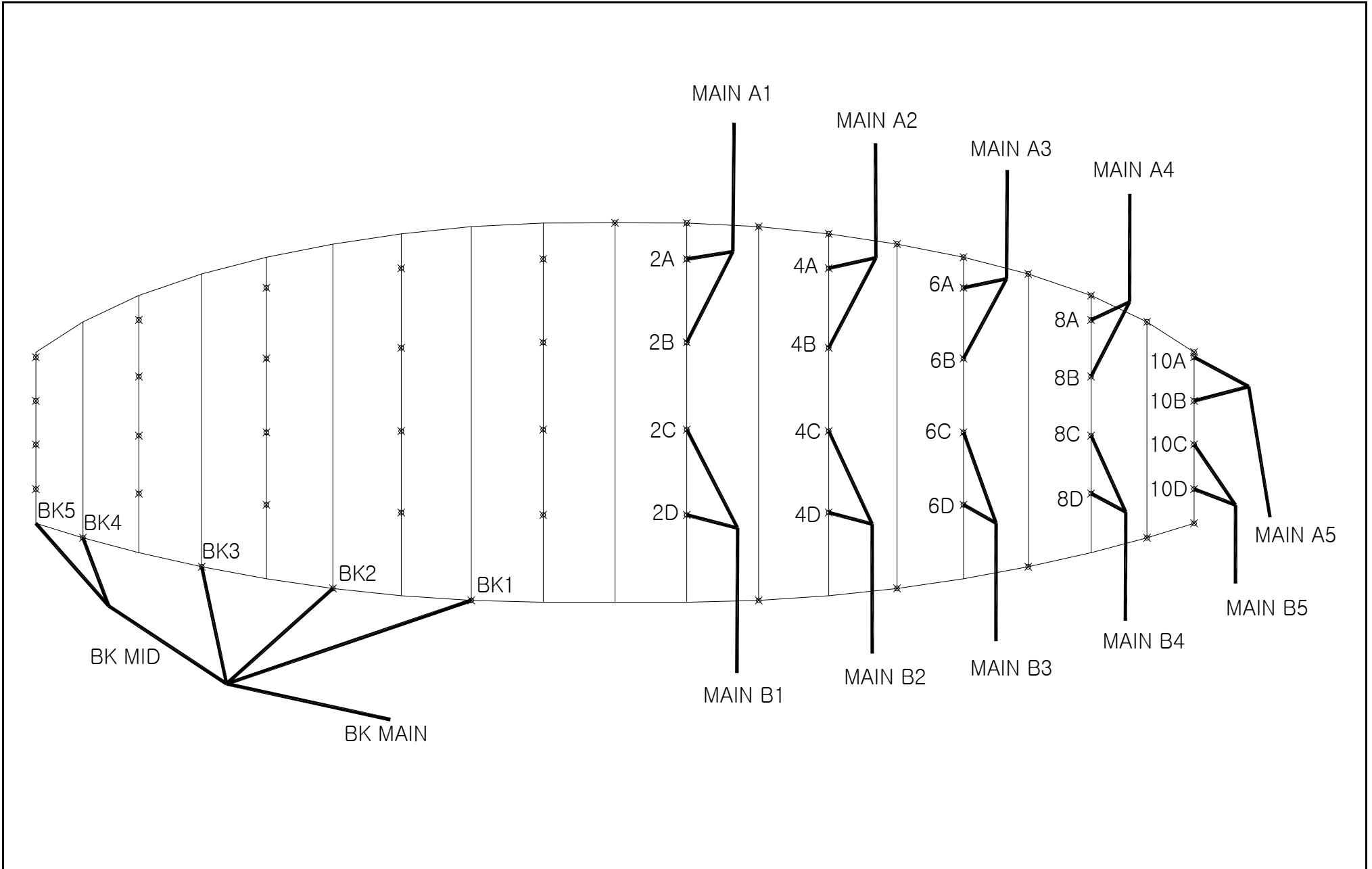


NANO2010

LINE PLAN

UPDATED : 30-Dec-09



NANO2010

SIZE :
UPPER

#11

UPDATED :

30-Dec-09

	A	B	C	D	BK
1					
2	832	855	910	1025	
3					2485
4	817	840	900	1010	
5					2345
6	791	815	875	970	
7					2280
8	720	755	805	880	
9					730
10	525	550	585	630	630

ALL UPPER

COUSIN #16650

MAIN, MID

"A" RISER			"B" RISER		
MAIN A1	2595	COUSIN #12999	MAIN C1	2635	COUSIN #12999
MAIN A2	2585	COUSIN #12999	MAIN C2	2620	COUSIN #12999
MAIN A3	2610	COUSIN #12999	MAIN C3	2640	COUSIN #12999
MAIN A4	2640	COUSIN #12999	MAIN C4	2655	COUSIN #12999
MAIN A5	2680	COUSIN #12999	MAIN C5	2670	COUSIN #12999

"BREAK"

MAIN	1730+200=1930	Gin Dyneema 2.3
MID	1475	COUSIN #16650

NANO2010

SIZE :
UPPER

#12.5

UPDATED :

30-Dec-09

	A	B	C	D	BK
1					
2	865	885	950	1070	
3					2580
4	850	875	940	1050	
5					2410
6	820	850	910	1010	
7					2375
8	750	785	835	915	
9					760
10	545	570	605	655	655

ALL UPPER

COUSIN #16650

MAIN, MID

"A" RISER		"B" RISER			
MAIN A1	2725	COUSIN #12999	MAIN C1	2765	COUSIN #12999
MAIN A2	2720	COUSIN #12999	MAIN C2	2750	COUSIN #12999
MAIN A3	2745	COUSIN #12999	MAIN C3	2775	COUSIN #12999
MAIN A4	2780	COUSIN #12999	MAIN C4	2800	COUSIN #12999
MAIN A5	2815	COUSIN #12999	MAIN C5	2810	COUSIN #12999

"BREAK"

MAIN	1860+200=2060	Gin Dyneema 2.3
MID	1535	COUSIN #16650

NANO2010

SIZE :
UPPER

#14

UPDATED :

30-Dec-09

	A	B	C	D	BK
1					
2	910	920	985	1110	
3					2675
4	895	905	975	1090	
5					2530
6	860	880	945	1045	
7					2465
8	780	815	865	950	
9					785
10	565	590	630	680	680

ALL UPPER

COUSIN #16650

MAIN, MID

"A" RISER			"B" RISER		
MAIN A1	2850	COUSIN #12999	MAIN C1	2895	COUSIN #12999
MAIN A2	2845	COUSIN #12999	MAIN C2	2880	COUSIN #12999
MAIN A3	2875	COUSIN #12999	MAIN C3	2905	COUSIN #12999
MAIN A4	2910	COUSIN #12999	MAIN C4	2935	COUSIN #12999
MAIN A5	2950	COUSIN #12999	MAIN C5	2950	COUSIN #12999

"BREAK"

MAIN	1945+200=2145	Gin Dyneema 2.3
MID	1600	COUSIN #16650